

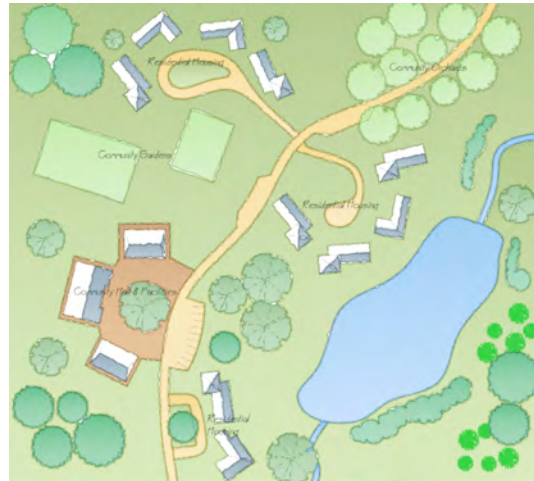


ECO-SUBDIVISION

Many of today's new developments have lost touch with the principles that society was built on for thousands of years. A sense of community, accessibility to resources and an awareness of your surroundings were all once an essential component in the success of a settlement that has to some degree been lost. Through thoughtful design and an awareness of "eco-friendly" issues the benefits of community living can greatly enhance the quality of life for the inhabitants in an eco-subdivision.

Eco subdivision is a form of development which has several key features. These features include:

- Community
- People friendly environments
- Sustainability
- Environmental responsibility
- Harmony with surroundings



Design of a development as a complete package, incorporating sympathetic roading layouts, environmentally friendly stormwater and waste disposal, and energy efficient housing will all increase the sustainability of a development.

With attention to the future use and enjoyment of the environment from the initial concept stage the benefits to the community as a whole can be enormous.

Elements of this style of design can be incorporated to greater or lesser extents in any development. If you wish to discuss this further then Canmap Hawley's professionals would be more than willing to help.

For more information: mdyer@canmaphawley.co.nz

